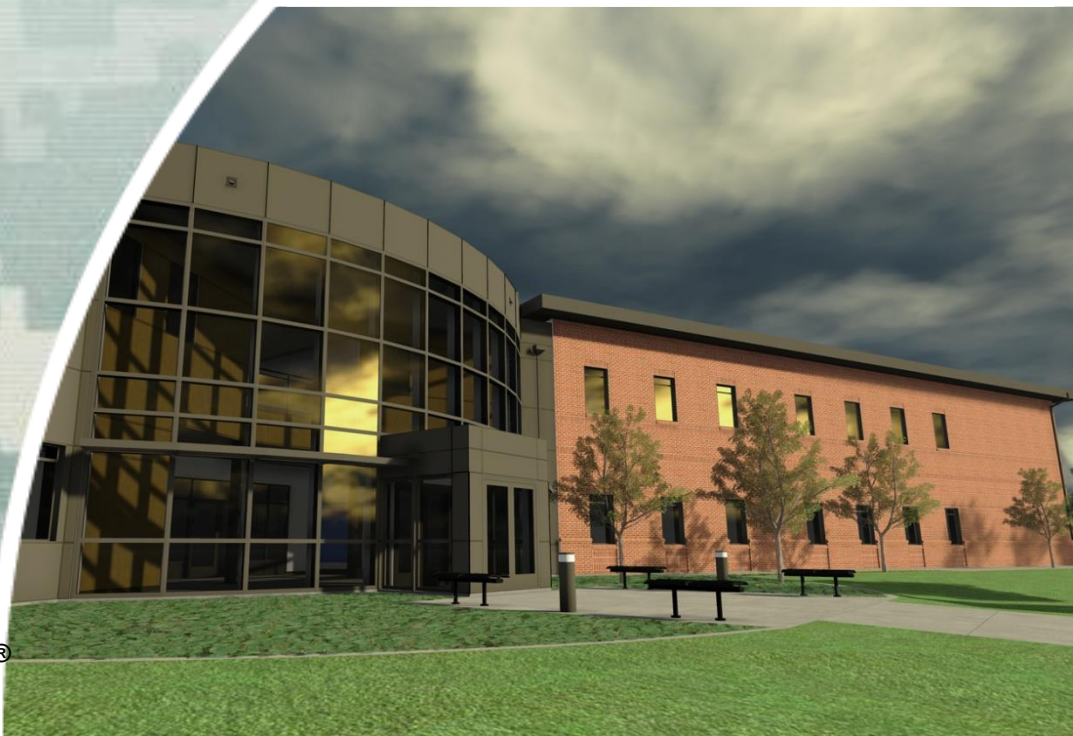


# Seattle District Overview

**LTC Andrew Park**  
Seattle District,  
U.S. Army Corps of Engineers  
Deputy District Commander  
May 2016



US Army Corps of Engineers  
**BUILDING STRONG**



# Agenda

- Brief overview of the Seattle District
- Missions
- Workload and Future
- Acquisition Program
- Small Business Goals
- Points of Contact

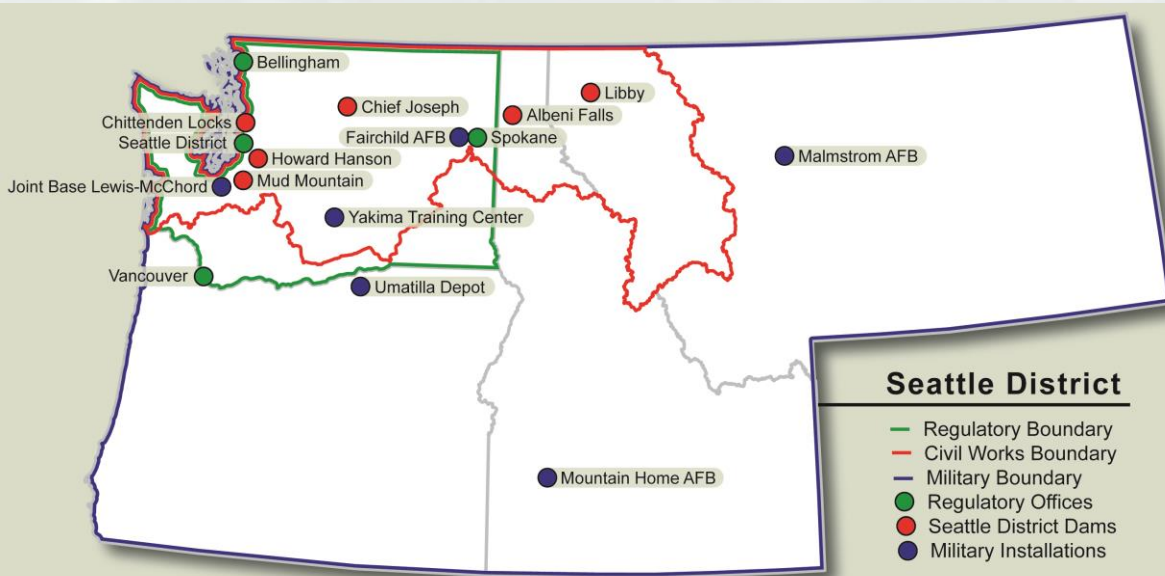


# Seattle District – A Full Service District

**Seattle District Mission:** We provide water resources and engineering solutions to the Pacific Northwest and the Nation

**Seattle District Vision:** Seattle District – Excelling in a Dynamic Environment: Mission First, People Always

Seattle District Boundaries



## By the Numbers:

- 820 Personnel
- FY16 Workload \$467M; ~ 51% Mil; 34% CW \$157M; 15% Environmental/Other \$71M
- 19 WA/ID/MT Congressional Delegates (Civil Works)
- Significant Tribal Interaction

## Challenges:

- Programs Decreasing
- Competition for \$ Increasing





# Seattle District Military Missions

**JBLM (JBLMAO,  
NWAO, LACPO)**



**FAIRCHILD AFB (AMC)  
Spokane Resident Office**

**MALMSTROM  
AFB (GSC)  
Resident Office**



**YAKIMA TC  
Project Office**

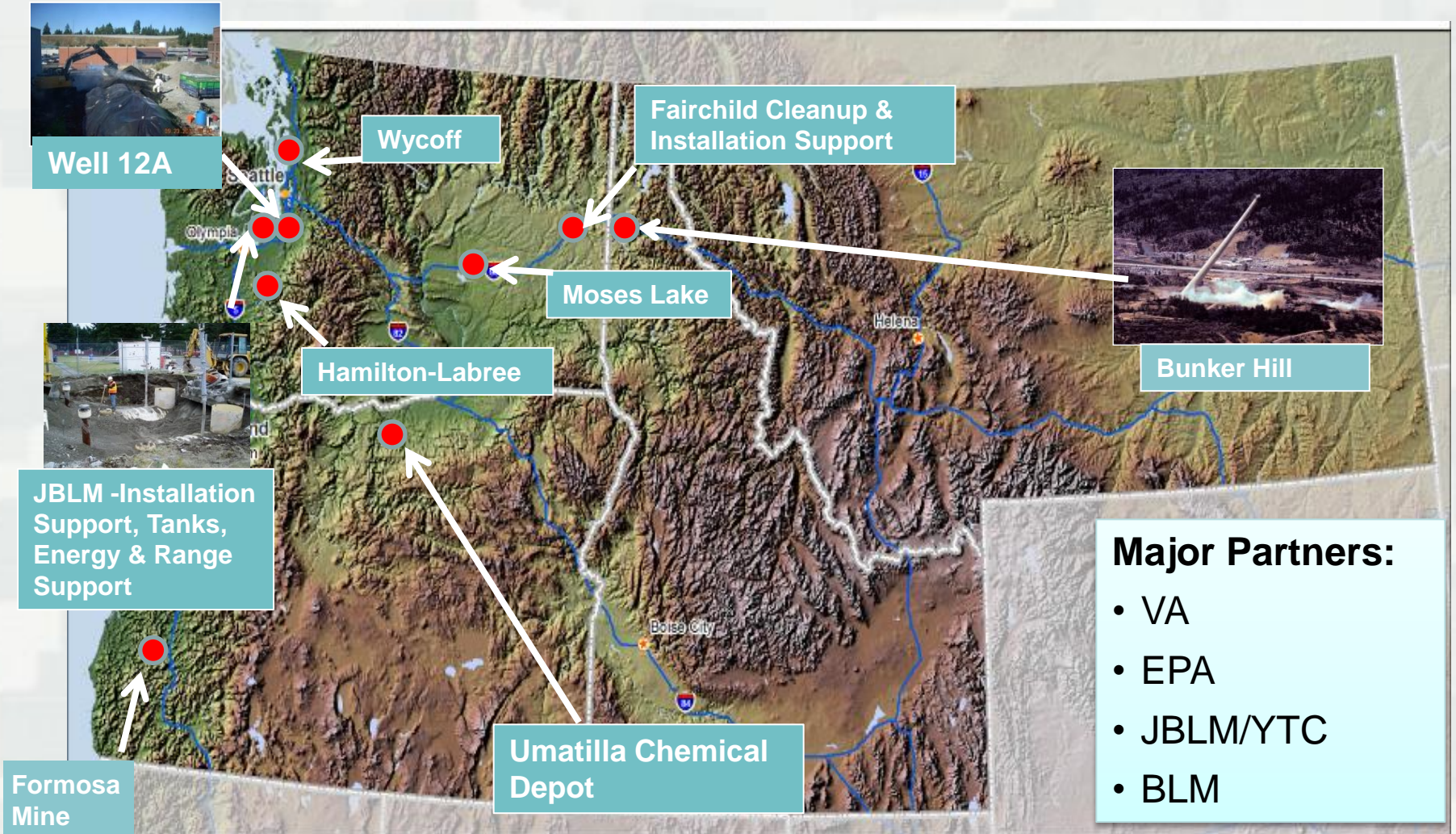


**MOUNTAIN HOME AFB (ACC)  
Project Office**



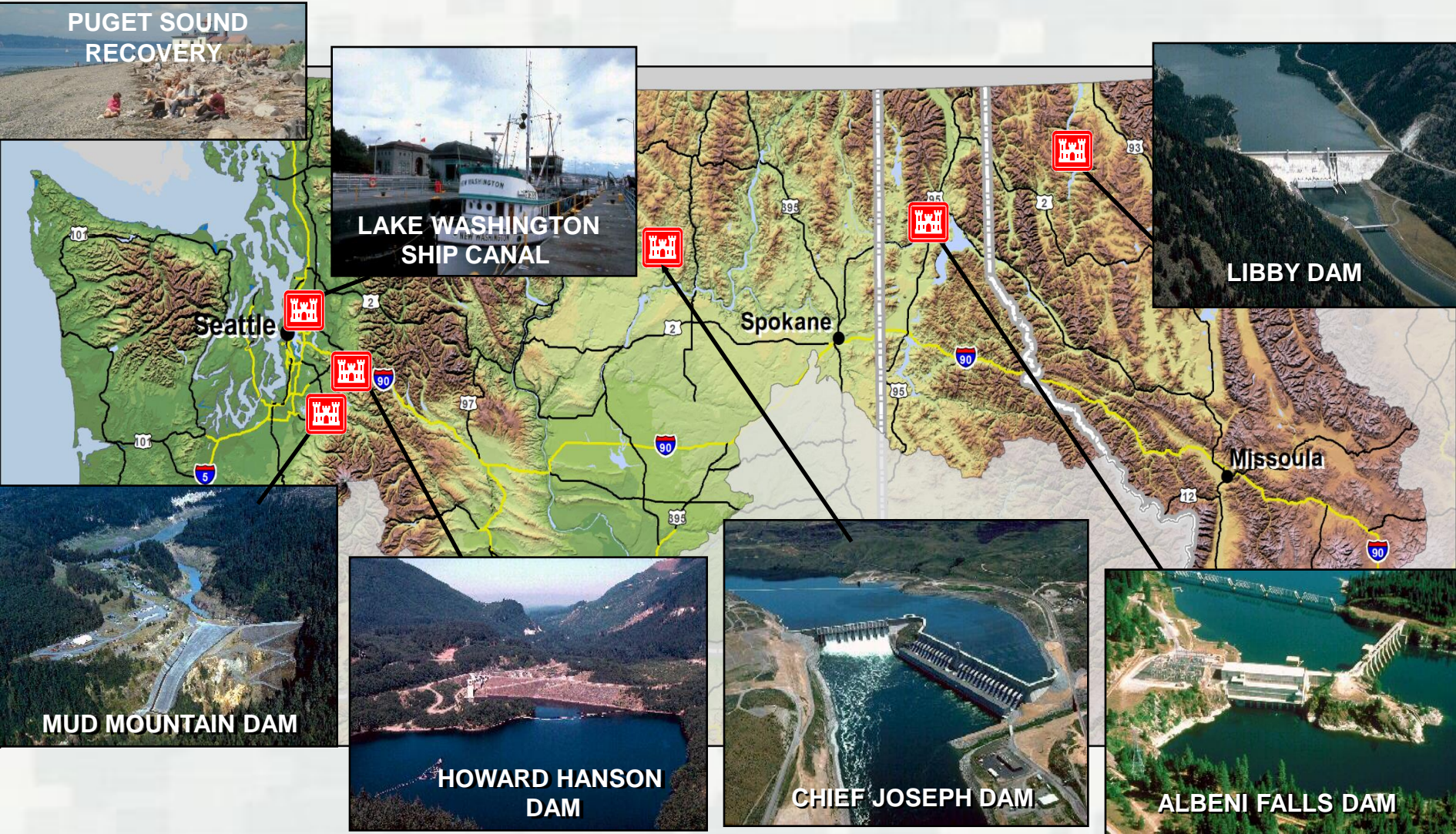


# Seattle District Environmental/IIS





# NWS Operating Projects & Civil Works



Coastal Navigation (14 Deep Draft & 7 Shallow Draft) & Regulatory (Offices at HQ, Spokane, Vancouver, Bellingham) in WA state

# District Workload & Future

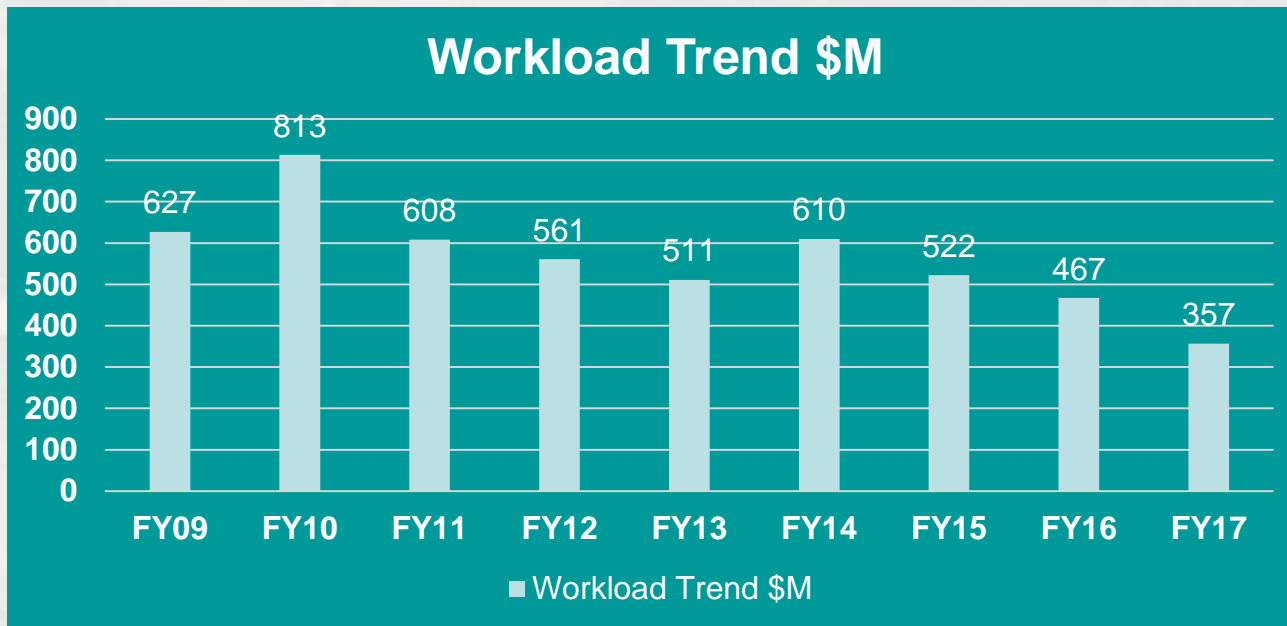
**Current Outlook:** Relatively healthy/diverse outlook; working regionally

## FY15 Workload \$522M

- Military Missions – \$340M/65%
- Civil Works – \$157M/30%
- Environmental/Interagency – \$25M/5%

## FY16 Workload \$467M

- Military Missions – \$239M/51%
- Civil Works – \$157M/34%
- Environmental/Interagency – \$71M/15%  
+ Future work for VA



**BUILDING STRONG®**

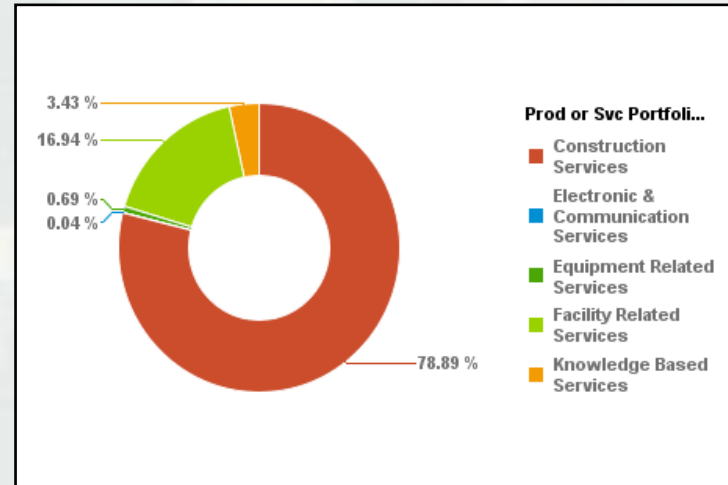


# Acquisition Program

## Customers

Funding Agency Name	% Dollars
DEPT OF THE ARMY	81.27%
U.S. ARMY CORPS OF ENGINEERS (CIVIL PROGRAM FINANCING ONLY)	15.11%
DEPT OF ENERGY	3.52%
DEPT OF THE AIR FORCE	0.09%
ENVIRONMENTAL PROTECTION AGENCY	0.01%
	0.00%

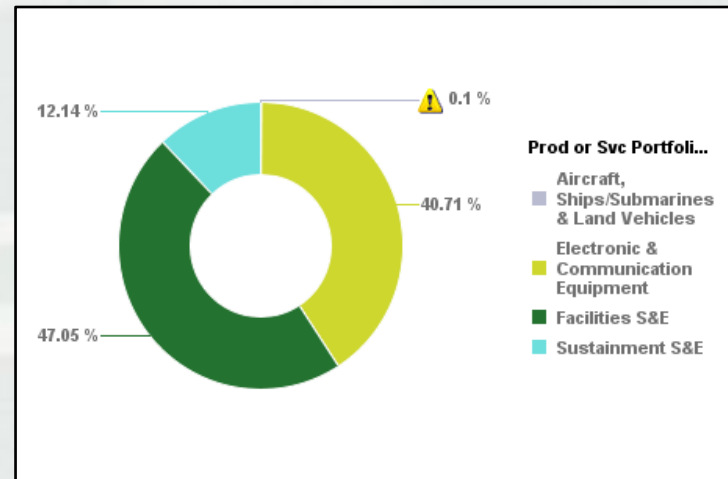
## Services Portfolio Spend



## FY16 Top Buys

- Construction of Structures & Facilities
- Architect & Engineering- Construction
- Natural Resources & Conservation
- Utilities & Housekeeping Services
- Special Studies & Analyses
- Maintenance, Repair or Alteration of Real Property
- Electrical Wire, Power & Distribution Equipment
- Construction, Mining, Excavating & Highway Maintenance
- Quality Control, Testing & Inspection

## Non-Services Portfolio Spend





# Contracting & Small Business

## Small Business Programs (1 May 2016)

Program	Actions	% Actions	Dollars	% Dollars	Goal	Variance
US Business	648		\$97,299,694			
Small Business	493	76.08%	\$78,090,025	80.26%	60.86%	19.40%
SDB	174	26.85%	\$56,538,602	58.11%	29.47%	28.64%
SDVOSB	76	11.73%	\$5,157,840	5.30%	11.74%	-6.44%
Woman Owned	91	14.04%	\$8,166,835	8.39%	13.16%	-4.77%
HubZone	55	8.49%	\$6,708,364	6.89%	9.61%	-2.72%

Prod or Svc Portfolio Group	US Bus Dollars	US SB Dollars	% SB Dollars
Construction Services	\$74,487,234	\$63,763,695	85.60%
Electronic & Communication Services	\$44,521	\$34,146	76.70%
Equipment Related Services	\$666,476	\$261,914	39.30%
Facility Related Services	\$15,692,276	\$8,937,161	56.95%
Knowledge Based Services	\$3,214,021	\$3,118,139	97.02%



# Points of Contact

- **Contact us:**  
<http://www.nws.usace.army.mil>
- Contracting  
David Williams  
[Roger.D.Williams@usace.army.mil](mailto:Roger.D.Williams@usace.army.mil)  
206-764-3772
- Technical  
JoAnn Walls  
[Joann.T.Walls@usace.army.mil](mailto:Joann.T.Walls@usace.army.mil)  
206-764-3776
- Small Business  
Lenneia (Lynn) Jennings  
[Lenneia.R.Jennings@usace.army.mil](mailto:Lenneia.R.Jennings@usace.army.mil)  
206-316-3990





# Questions



**BUILDING STRONG®**